

SZ-001-2 大片径氧化石墨烯

1 技术参数 (Specification)

产品 Product	大片径氧化石墨烯片 Large diameter graphene oxide sheet
牌号 ID	SZ-001-2
片径 Diameter	>5 μ m
厚度 Thickness	1-6 nm
氧碳摩尔比 O/C mole ratio	0.4-0.6
备注 Remarks	Hummers 法制备, 真空干燥 Hummers method, Vacuum drying

2 表征测试 (Characterizations)

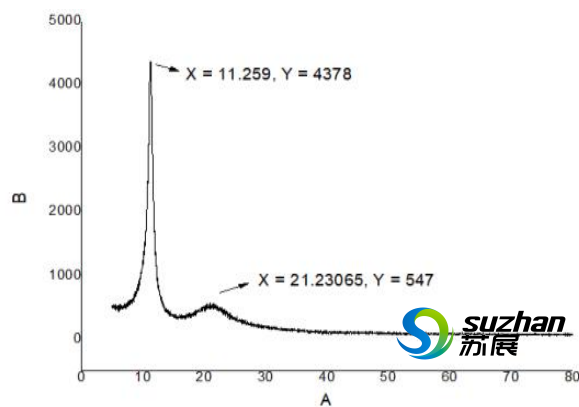


图 1 大片径氧化石墨烯的 XRD 图

Fig.1 XRD pattern of graphene oxide sheet

南京苏展智能科技有限公司
 地址: 南京市栖霞区广月路 30 号十月科创园 S06 栋南京邮电
 大学国家大学科技园
 邮编: 210033
 电话 Tel: 13801599205

Nanjing Suzhan Smart Tech Co.,Ltd
 Add: Nanjing City Jiangsu Province China
 Zip: for 210033
 E-mail: cnsuzhan@126.com
[Http://www.cnsuzhan.com](http://www.cnsuzhan.com)

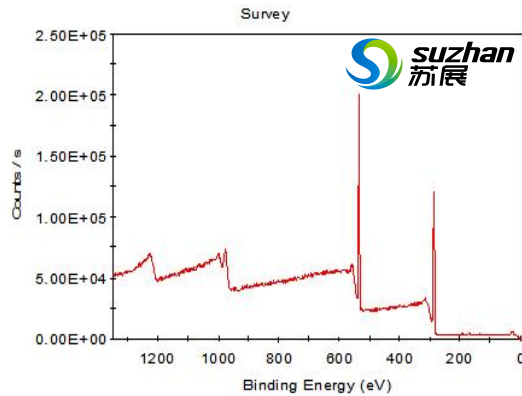


图 2 大片径氧化石墨烯片的 XPS 图谱
Fig.2 XPS spectrum of graphene oxide sheet

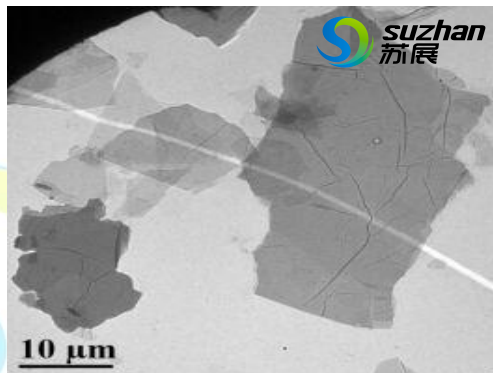


图 4 大片径氧化石墨烯的 TEM 图
Fig.4 TEM of graphene oxide sheet

3 应用领域(Application Fields)

吸附、分离、催化、固相萃取、检测、传感器等。

Adsorption, Separation, Catalysis, Solid Phase Extraction, Detection and Sensors etc

4 储存条件(Storage Conditions)

干燥避光保存，储存温度不超过 20℃，固体分散时温度需控制在 20℃下，开封前最长保存期限 6 个月。氧化石墨烯乙醇溶液的颜色会随着时间的延长而逐渐加深，建议尽快用完，现制现用。

Sealed, avoid light, and keep under 20℃, and the temperature should be controlled under 20℃ when dispersion sheet and powder. Expiry date: Six months before unsealing. The color of graphene oxide ethanol solution will gradually deepen with the extension of time. It is recommended to consume it as soon as possible and prepare it once needed.

5 订购须知 (Ordering Information)

如果对氧化石墨烯的颜色、浓度、片径等有特殊要求，可以与销售人员联系。

南京苏展智能科技有限公司
地址: 南京市栖霞区广月路 30 号十月科创园 S06 栋南京邮电
大学国家大学科技园
邮编: 210033
电话 Tel: 13801599205

Nanjing Suzhan Smart Tech Co.,Ltd
Add: Nanjing City Jiangsu Province China
Zip: for 210033
E-mail: cnsuzhan@126.com
[Http://www.cnsuzhan.com](http://www.cnsuzhan.com)



南京苏展智能科技有限公司

If you have special requirements on color, concentration and diameter of graphene oxide, please contact our sellers.

声明：我司保证技术报告中的信息的准确性，但不保证材料的普适性，也不负责由此导致的任何损失。提供的参数为统计数据，允许少量浮动。且我司提供的技术报告都是面向所有客户，报告中的表征图片请勿擅自截图使用。

Disclaimer: SUZHAN LLC believes that the information in this Technical Data Sheet is accurate and represents the best and most current information available to us. SUZHAN Material makes no representations or warranties either express or implied, regarding the suitability of the material for any purpose or the accuracy of the information contained within this document. Accordingly, SUZHAN Material will not be responsible for damages resulting from use of or reliance upon this information. Please do not use screen shots of any characteristic graphs in this report without permission.

10/12/2018 Ed



南京苏展智能科技有限公司
地址：南京市栖霞区广月路 30 号十月科创园 S06 栋南京邮电
大学国家大学科技园
邮编：210033
电话 **Tel:** 13801599205

Nanjing Suzhan Smart Tech Co.,Ltd
Add: Nanjing City Jiangsu Province China
Zip: for 210033
E-mail: cnsuzhan@126.com
[Http://www.cnsuzhan.com](http://www.cnsuzhan.com)